

CLEVA CRETE

engineering concrete excellence

Product Information Brochure



About Us

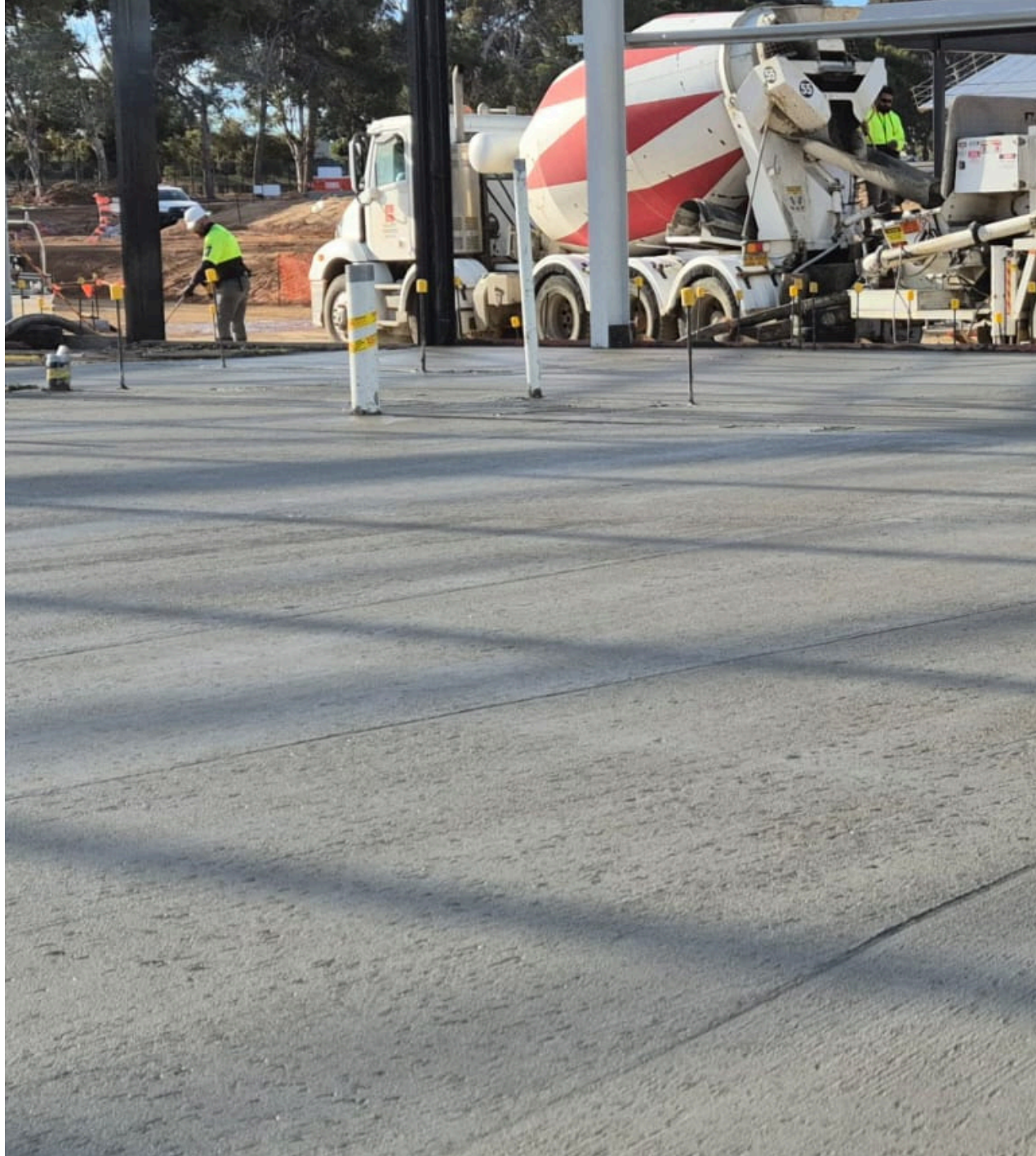
CLEVA CRETE specialise in waterproofing admixtures designed for construction projects in the commercial, military and government infrastructure sectors.

Our technology disrupts normal capillary formation during concrete's plastic stage, delivering a proven solution where moisture vapour control and superior long-term shrinkage reduction is required.

Any of our admixtures formulated by CLEVA CRETE, specified to go into your concrete matrix, will heavily reduce shrinkage cracking, lower the heat of hydration, reduce slab curl, add durability and greatly reduce the risk of early onset concrete cancer.



Guaranteed by us with up to a 25 year warranty.



1300 503 929



info@clevacrete.com.au



405A Grand Junction Road, Wingfield SA 5013

CLEVA CRETE Products

842 MVRA

- ✓ Moisture Vapour Control
- ✓ Densification
- ✓ Reduce Cracking
- ✓ Reduce Heat of Hydration
- ✓ Reduce Slab Curl
- ✓ Curing Agent
- ✓ 25 Year Warranty

842 WP

- ✓ Waterproofing
- ✓ Chemical Resistance
- ✓ Densification
- ✓ Reduce Cracking
- ✓ Reduce Heat of Hydration
- ✓ Reduce Slab Curl
- ✓ Extreme pH Environments
- ✓ 10 Year Warranty

842 RP

- ✓ Waterproofing
- ✓ Moisture Vapour Control
- ✓ Densification
- ✓ Reduce Cracking
- ✓ Reduce Heat of Hydration
- ✓ Reduce Slab Curl
- ✓ Abrasion Resistance
- ✓ Ionic Steel Treatment
- ✓ Reduced Efflorescence
- ✓ Eliminates Steel oxidisation

CLEVA CRETE Product Usage Examples

842 MVRA

- ✓ Schools
- ✓ Child Care Centres
- ✓ Hospitals
- ✓ Ambulance Stations
- ✓ Shopping centers
- ✓ Warehousing
- ✓ Apartments

842 WP

- ✓ Underground Carparks
- ✓ Tunnels
- ✓ Rooftops
- ✓ Wineries
- ✓ Basements
- ✓ Sewerage Treatment Plants
- ✓ Piling
- ✓ Aquaculture Industries

842 RP

- ✓ High Rise Constructions
- ✓ Infrastructure
- ✓ Mineshafts
- ✓ Wharves



Accelerated Construction: Flooring can be laid within 14 days of pouring concrete, speeding up project completion.

Enhanced Quality: Prevents capillary formation and eliminates bleed water, ensuring superior structural integrity and stronger bond to flooring adhesives.

Cost Efficiency: Avoids costly moisture mitigation measures and flooring failures, keeping projects within budget and minimising delays and contingency liabilities.

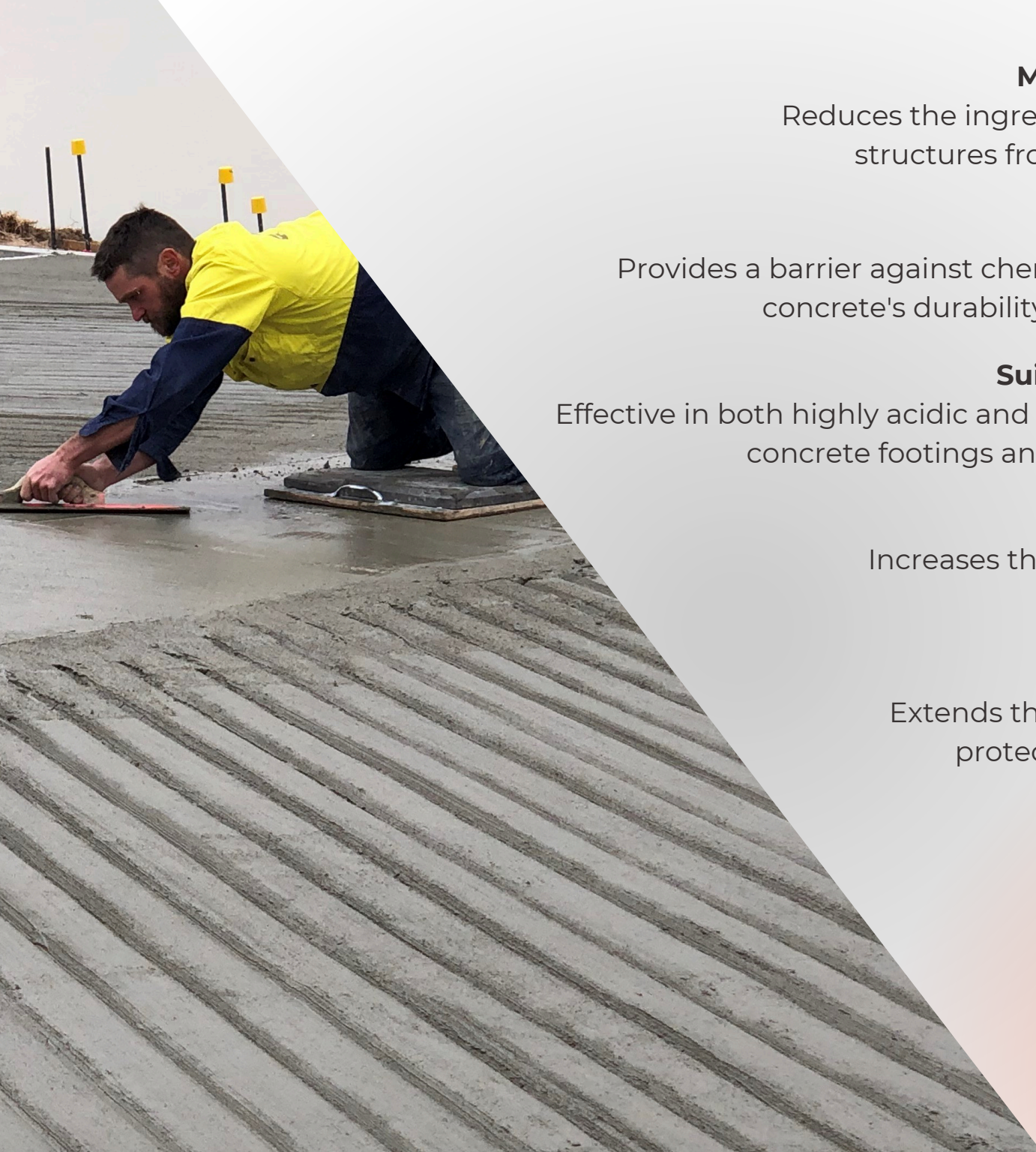
Environmental Benefits: Reduces the need for additional materials and energy-intensive processes, lowering the project's environmental footprint.

Improved Conditions: Eliminates moisture related issues, creating safer and healthier work environments and spaces for end users.

Long-term Savings: Provides durable finish, reducing future repair/replacement needs, yielding long-term savings for owners and stakeholders.

CLEVA CRETE
842 MVRA





Mitigates Moisture Penetration:

Reduces the ingress of water, protecting concrete structures from damage caused by moisture

Resists Chemical Penetration:

Provides a barrier against chemical infiltration, enhancing the concrete's durability, reducing maintenance needs.

Suitable for Harsh Environments:

Effective in both highly acidic and alkaline environments enabling concrete footings and piers in aggressive substrates.

Enhances Durability:

Increases the overall strength and longevity of concrete structures.

Long-term Savings:

Extends the operational life of concrete by protecting it from environmental and chemical damage

**CLEVA CRETE
842 WP**

CLEVA CRETE

842 RP



Corrosion Inhibition:

Prevents oxidation of steel reinforcement inside the concrete matrix & protects exposed steel reinforcement in cracked concrete

Waterproofing:

Provides effective waterproofing eliminating the need for additional moisture control

Enhanced Concrete Properties:

Increases concrete density and hardness and improves abrasion resistance

Reduction of Common Concrete Issues:

Reduces efflorescence / Minimizes freeze-thaw spalling Prevents delamination / Mitigates spider cracking / Reduces slab curl

Compatibility with Construction Schedule:

Allows for the application of moisture-sensitive coatings and adhesives within the normal construction timeline

Permanent and Integral Solution:

The organic chemical reaction creates C-S-H, a permanent component of the concrete, eliminating moisture vapor emission routes



Contact us for a quote for your next projects



1300 503 929



info@clevacrete.com.au



405A Grand Junction Road, Wingfield 5013